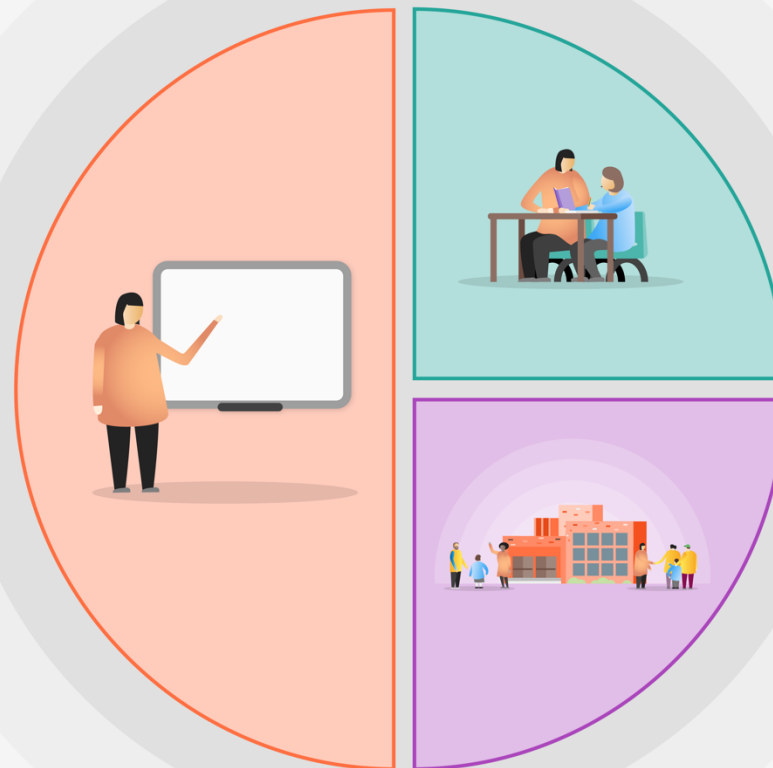


1 Teaching

- Quality First Teaching supported by evidence-informed CPL for teachers and support staff.
- Curriculum Leaders design bespoke curriculum catch up plans.
- Frequent Low Stakes Testing to ensure all students, and in particular disadvantaged students, experience success and celebrate the acquisition of knowledge.
- Change the CPL timetable to support staff wellbeing and provide greater time in departments to discuss students and plan interventions and high-quality responsive teaching.
- Whole school CPL programme - Literacy (PiXL Unlock), Metacognition (EEF), Knowledge retention (PiXL Gaps and Growth Strategy) and digital learning (DLL).
- Tutor time to provide discussion opportunities and emotional support (CSP).
- Appointment of Digital Learning Lead to monitor, review and continue to develop remote/blended learning approach. Continue the development of SIMSapp, TEAMS and the integration of GCSEPod into Home Learning.
- Integration of Careers teaching into subject areas.



2 Targeted academic support

- Year 11 English and Maths tutors providing 1-1 and small group support.
- National Tutoring Programme
- Accelerated Reader
- After school workshops
- Virtual parent evenings with subject specific targets.
- Mentoring programme for specific students affected by Covid through 'Someone Cares'.
- Deployment of cover supervisors to support within lessons.
- Newcastle United Foundation qualifications and mentoring in KS3.

3 Wider strategies

- Attendance Team Support.
- Ensure pastoral contact home for disadvantaged students also identify barriers to engagement due to technology or lack of other forms of support.
- Whole school SEND CPL and pupil passports.
- Hot Choc Friday.
- Whole school reflection and rewards days at end of autumn term.
- LORIC points and certificates.